

24 Market Place, Bolsover, Chesterfield, S44 6PN
01246 822 138
enquiries@wilsonstateagents.co.uk
www.wilsonstateagents.co.uk



23 Main Street
Chesterfield, Derbyshire S44 6UJ

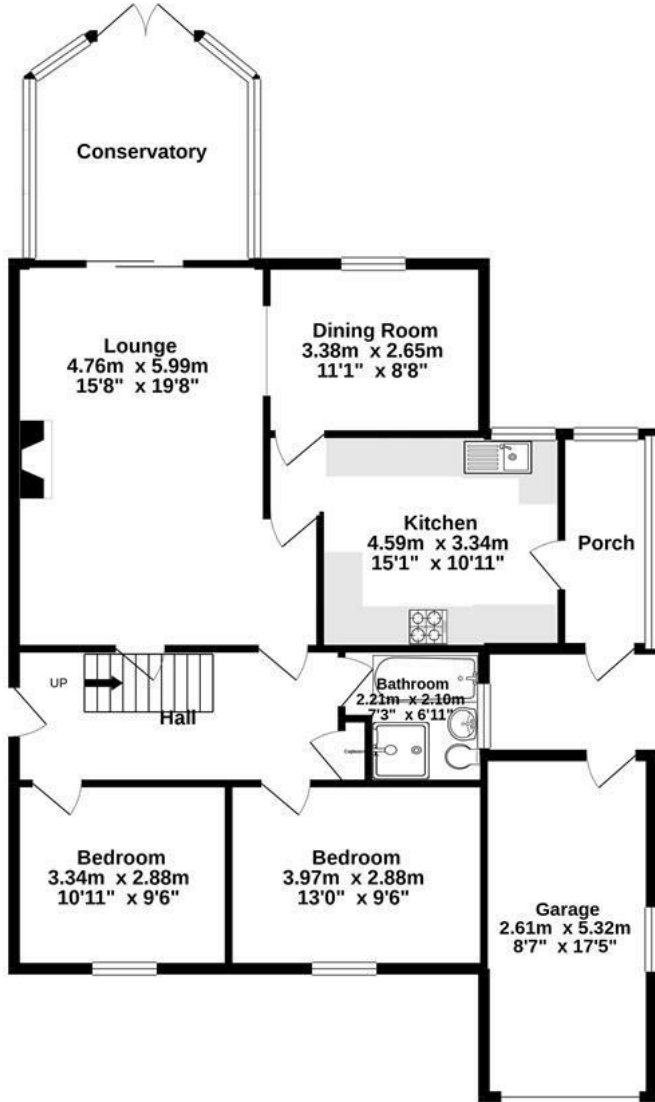
OFFERS IN THE REGION OF £275,000

Enjoying a most sought after village location with excellent commuting links to the M1 via J29 this four bedroomed detached dormer style bungalow with potential offers spacious, flexible accommodation comprising entrance hall, lounge, kitchen, separate dining room, conservatory, two double bedrooms and bathroom to the ground floor with a further two double bedrooms, dressing room/ potential fifth bedroom and bathroom to the first floor. A driveway provides ample off road parking, there is also an attached garage, garden to the front and an enclosed rear garden.

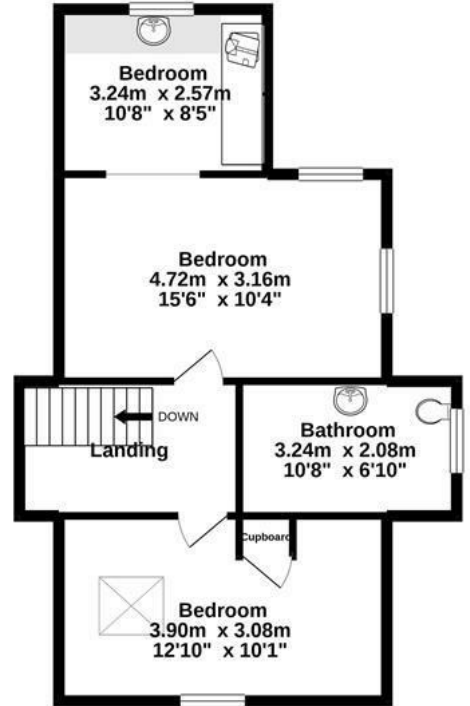
23 MAIN STREET, CHESTERFIELD, DERBYSHIRE S44 6UJ



GROUND FLOOR
114.0 sq.m. (1227 sq.ft.) approx.



1ST FLOOR
53.7 sq.m. (578 sq.ft.) approx.



TOTAL FLOOR AREA: 167.7 sq.m. (1805 sq.ft.) approx.

Whilst every attempt has been made to ensure the accuracy of the floorplan contained here, measurements of doors, windows, rooms and any other items are approximate and no responsibility is taken for any error, omission or mis-statement. This plan is for illustrative purposes only and should be used as such by any prospective purchaser. The services, systems and appliances shown have not been tested and no guarantee as to their operability or efficiency can be given.
Made with Metropix ©2020

Energy Efficiency Rating		Environmental Impact (CO ₂) Rating	
Score	Details	Score	Details
Energy A	Very low energy demand	Env A	Very low environmental impact
Energy B	Low energy demand	Env B	Low environmental impact
Energy C	Medium energy demand	Env C	Medium environmental impact
Energy D	High energy demand	Env D	High environmental impact
Energy E	Very high energy demand	Env E	Very high environmental impact
Energy F	Very high energy demand	Env F	Very high environmental impact
Energy G	Very high energy demand	Env G	Very high environmental impact

England & Wales 2020/1/16