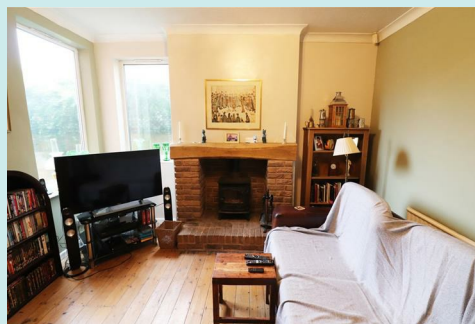


24 Market Place, Bolsover, Chesterfield, S44 6PN
01246 822 138
enquiries@wilsonstateagents.co.uk
www.wilsonstateagents.co.uk

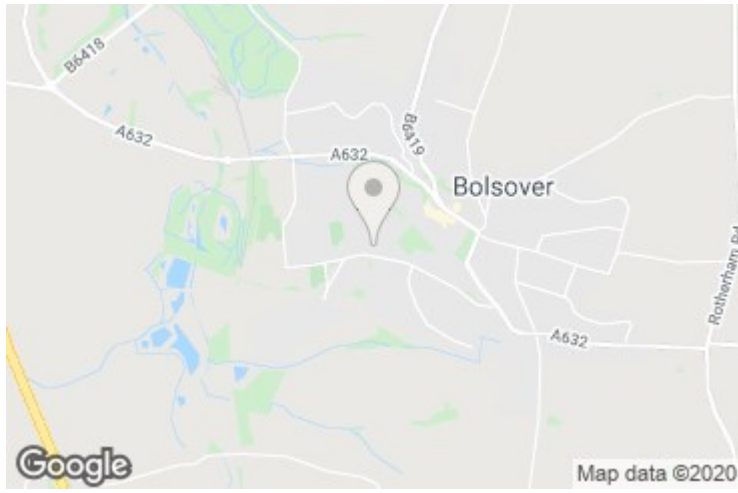


57 Castle Lane
Chesterfield, Derbyshire S44 6PS

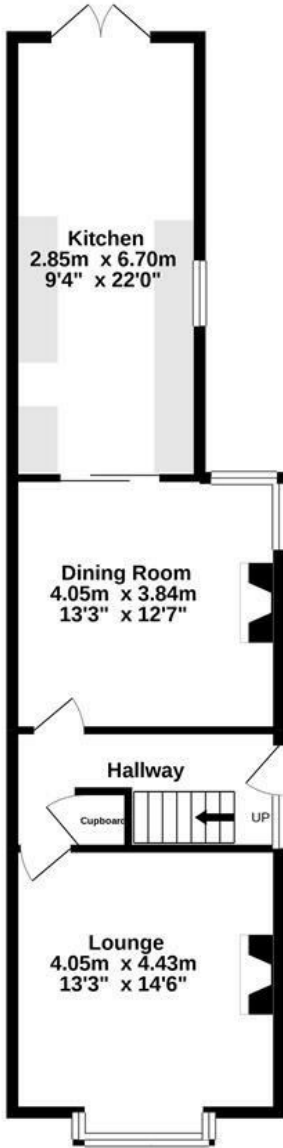
£275,000

DOUBLE GARAGE* *GOOD SIZED GARDEN* *VIEW OF BOLSOVER CASTLE Enjoying an elevated position in a sought after location with views of Bolsover's landmark castle, this five bedroomed property presents an amazing opportunity to acquire a beautiful and spacious family home set over three floors. The accommodation comprises two reception rooms and kitchen to the ground floor, three bedrooms and bathroom to the second floor with two further bedrooms to the second floor. There is a large, established, enclosed rear garden and double garage. Having easy access to the M1 via J29a Markham Vale with fantastic commuting links to Chesterfield and Mansfield.

57 CASTLE LANE, CHESTERFIELD, DERBYSHIRE S44 6PS



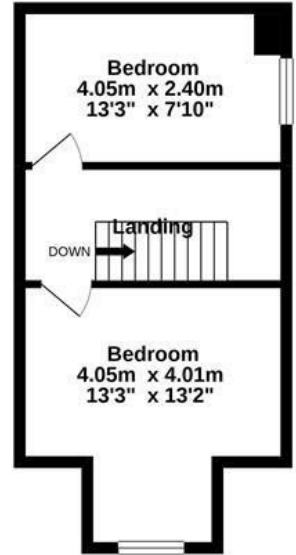
GROUND FLOOR
57.8 sq.m. (622 sq.ft.) approx.



1ST FLOOR
57.6 sq.m. (620 sq.ft.) approx.



2ND FLOOR
30.3 sq.m. (326 sq.ft.) approx.



TOTAL FLOOR AREA : 145.6 sq.m. (1568 sq.ft.) approx.

Whilst every attempt has been made to ensure the accuracy of the floorplan contained here, measurements of doors, windows, rooms and any other items are approximate and no responsibility is taken for any error, omission or mis-statement. This plan is for illustrative purposes only and should be used as such by any prospective purchaser. The services, systems and appliances shown have not been tested and no guarantee as to their operability or efficiency can be given.
Made with Metropix ©2020

Energy Efficiency Rating		Environmental Impact (CO ₂) Rating	
Current	Potential	Current	Potential
Energy A	Energy A	Env A	Env A
Energy B	Energy B	Env B	Env B
Energy C	Energy C	Env C	Env C
Energy D	Energy D	Env D	Env D
Energy E	Energy E	Env E	Env E
Energy F	Energy F	Env F	Env F
Energy G	Energy G	Env G	Env G

For more information, please contact us at: 01203 616161

England & Wales