

24 Market Place, Bolsover, Chesterfield, S44 6PN
01246 822 138
enquiries@wilsonstateagents.co.uk
www.wilsonstateagents.co.uk

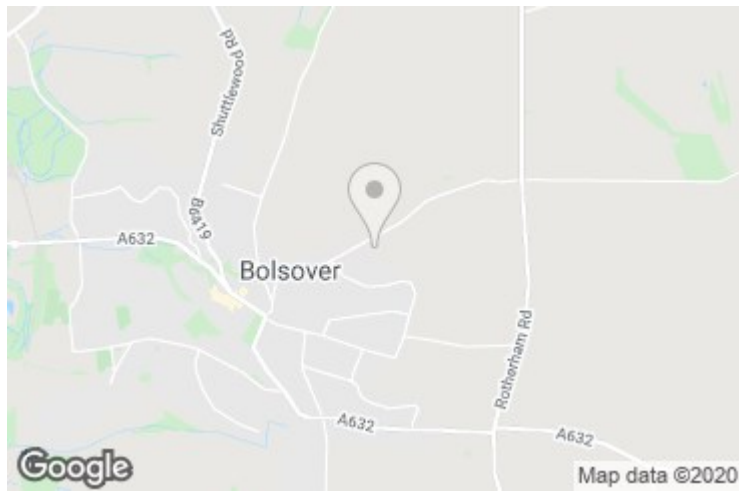


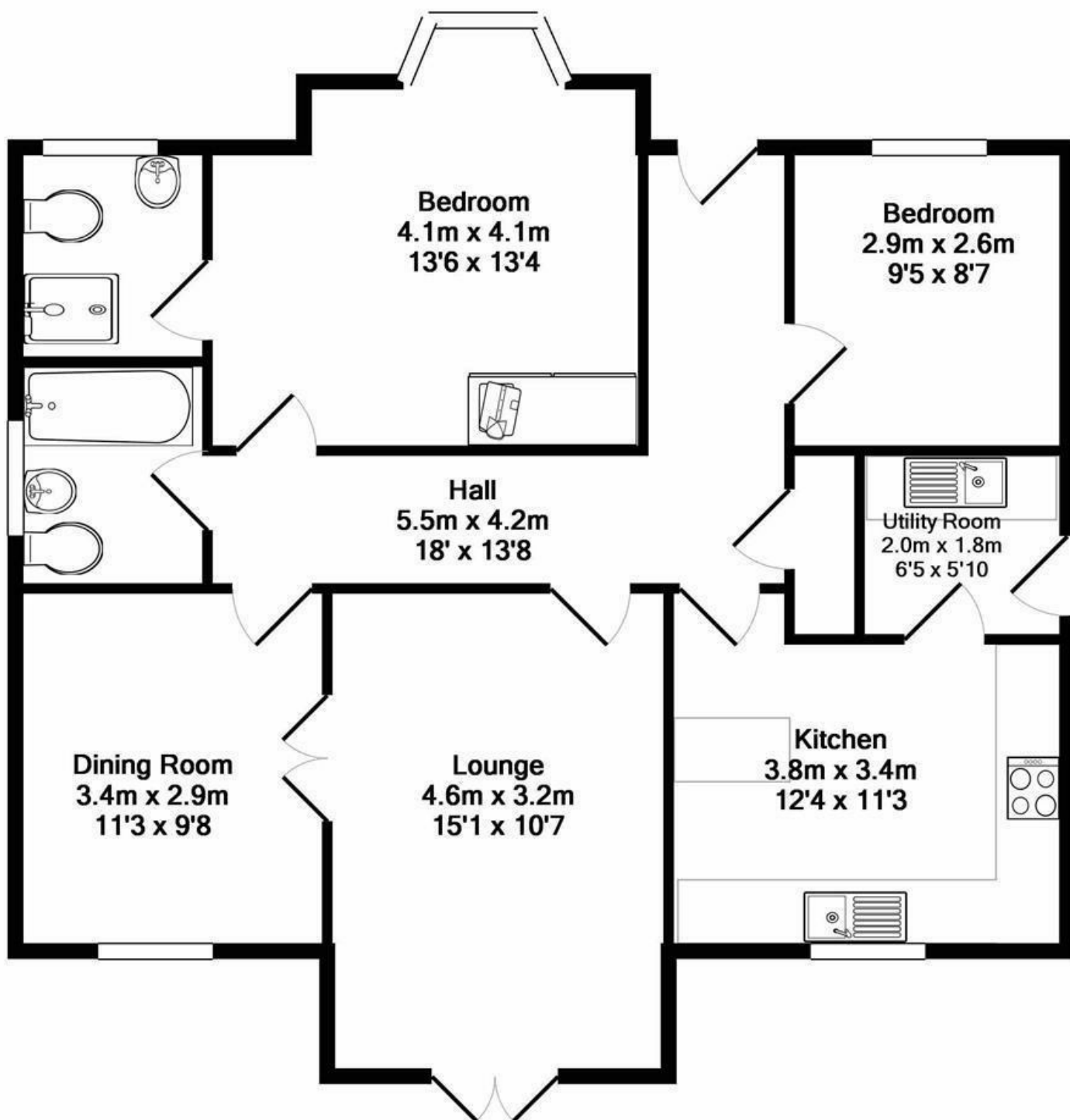
**3 Welbeck Gardens
Chesterfield, Derbyshire S44 6XX**

£234,950

SOUGHT AFTER LOCATION* *OFF ROAD PARKING AND DETACHED GARAGE Stunningly beautiful and individually designed modern detached bungalow, positioned within enclosed grounds and ideally situated for easy, level access to the centre of Bolsover. Also close to local countryside with views over open fields this presents a unique opportunity to acquire a beautiful, substantial property in an enviable position. Finished to the highest specification throughout the versatile accommodation boasts entrance hall, lounge with double doors through to dining room / second bedroom and French doors leading out to the private garden, breakfast kitchen, utility room, master bedroom with en-suite, third bedroom / office and bathroom. Outside sees a larger than average driveway leading to a detached garage, to the rear is an enclosed garden specifically designed for low maintenance.

3 WELBECK GARDENS, CHESTERFIELD, DERBYSHIRE S44 6XX





TOTAL APPROX. FLOOR AREA 81.7 SQ.M. (880 SQ.FT.)
Measurements are approximate. Not to scale. Illustrative purposes only
Made with Metropix ©2018

