

24 Market Place, Bolsover, Chesterfield, S44 6PN
01246 822 138
enquiries@wilsonstateagents.co.uk
www.wilsonstateagents.co.uk



28 Woodhouse Lane
Chesterfield, Derbyshire S44 6BJ

GUIDE PRICE £159,950

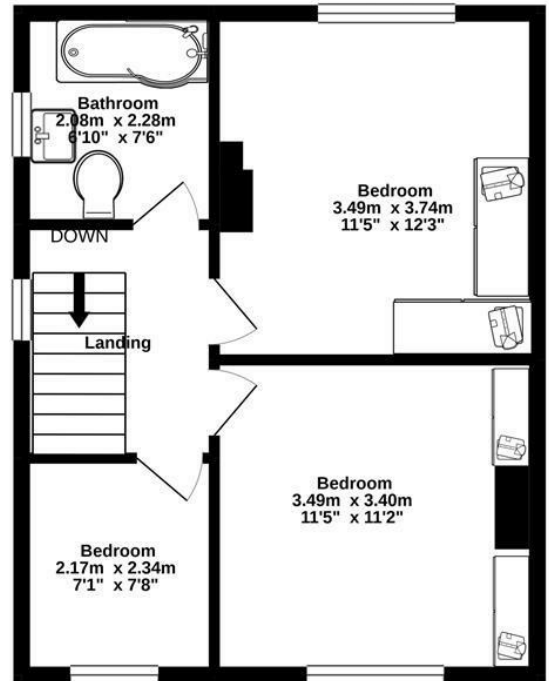
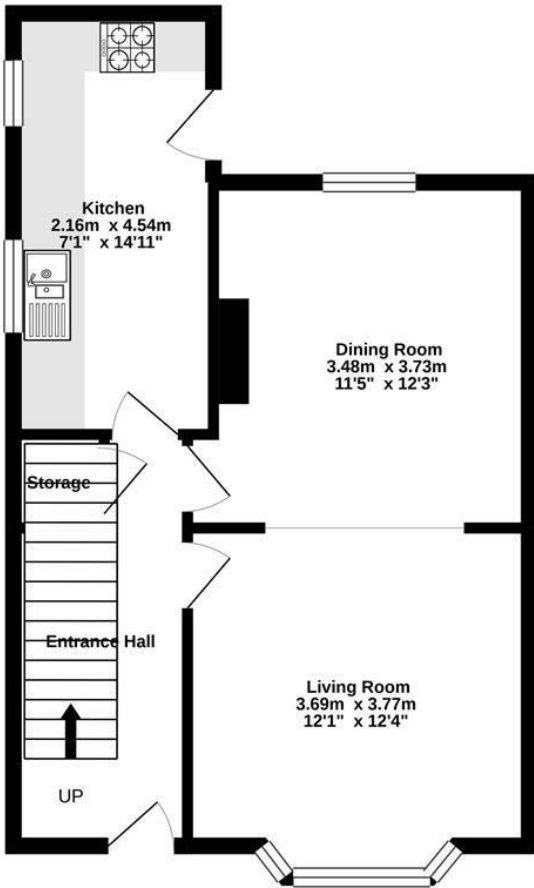
OFF STREET PARKING* DETACHED GARAGE Having fantastic commuting links to the M1 via J29a Markham vale, this stunning three bedroomed semi detached house, set back from the road which would suit first time buyers or the growing family alike. The accommodation is spacious and beautifully presented comprising an entrance hall, lounge with bay window, dining room, three bedrooms and bathroom. Patio and easily maintained garden to the rear with detached garage, and good sized garden to the front.

28 WOODHOUSE LANE, CHESTERFIELD, DERBYSHIRE S44 6BJ



GROUND FLOOR
44.1 sq.m. (474 sq.ft.) approx.

1ST FLOOR
39.1 sq.m. (421 sq.ft.) approx.



TOTAL FLOOR AREA : 83.2 sq.m. (895 sq.ft.) approx.

Whilst every attempt has been made to ensure the accuracy of the floorplan contained here, measurements of doors, windows, rooms and any other items are approximate and no responsibility is taken for any error, omission or mis-statement. This plan is for illustrative purposes only and should be used as such by any prospective purchaser. The services, systems and appliances shown have not been tested and no guarantee as to their operability or efficiency can be given.
Made with Metropix ©2021.

Energy Efficiency Rating		Environmental Impact (CO ₂) Rating	
Current	Potential	Current	Potential
Energy A	Energy A	Env Impact A	Env Impact A
Energy B	Energy B	Env Impact B	Env Impact B
Energy C	Energy C	Env Impact C	Env Impact C
Energy D	Energy D	Env Impact D	Env Impact D
Energy E	Energy E	Env Impact E	Env Impact E
Energy F	Energy F	Env Impact F	Env Impact F
Energy G	Energy G	Env Impact G	Env Impact G

For energy efficient homes, higher ratings mean better energy efficiency and lower CO₂ emissions.
England & Wales 2020/11/16