

24 Market Place, Bolsover, Chesterfield, S44 6PN  
01246 822 138  
enquiries@wilsonstateagents.co.uk  
www.wilsonstateagents.co.uk



42 Longlands  
Chesterfield, Derbyshire S44 6DL

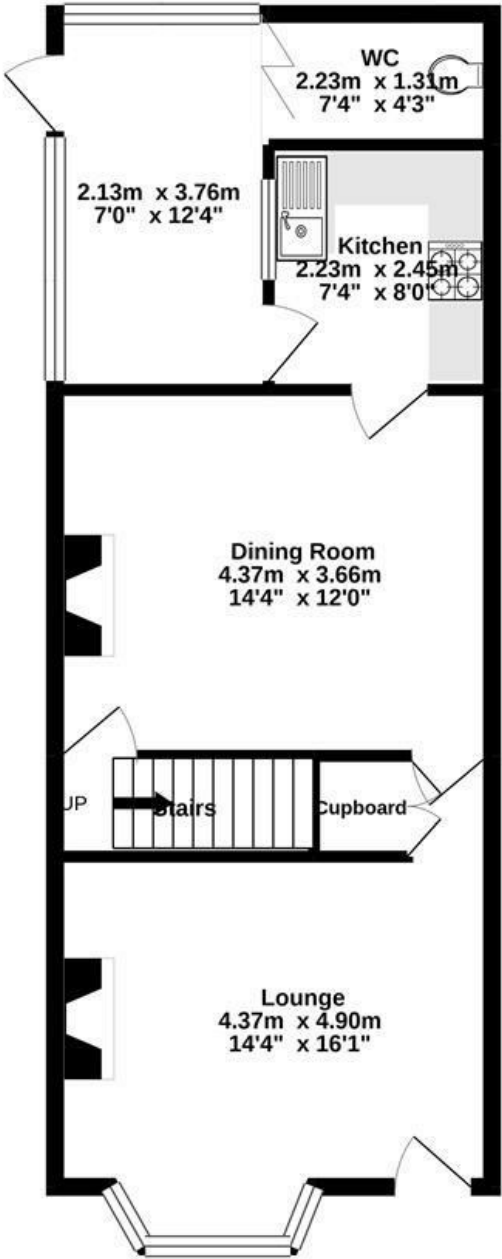
**OFFERS IN THE REGION OF £119,950**

**\*CALLING ALL FIRST TIME BUYERS\*** Beautiful and spacious end terrace property, set back from the road and enjoying a sought after location, within easy walking distance of local shops, amenities and schools. This ideal starter home / investment opportunity also benefits from a good sized enclosed rear garden. The accommodation is immaculately presented throughout and comprises lounge, dining room with log burner, kitchen, two generous double bedrooms and bathroom. Ideally placed for accessing the M1 via J29a Markham Vale.

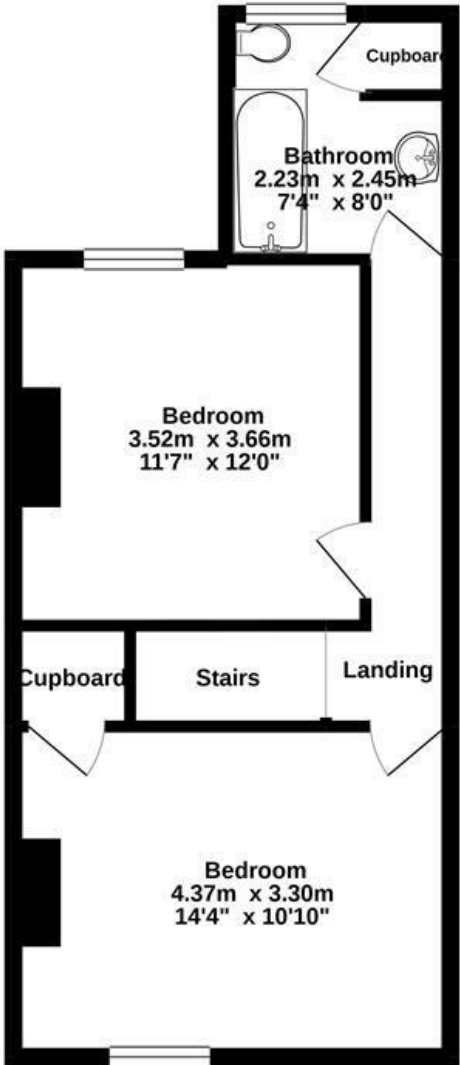
## 42 LONGLANDS, CHESTERFIELD, DERBYSHIRE S44 6DL



GROUND FLOOR  
51.0 sq.m. (549 sq.ft.) approx.



1ST FLOOR  
39.4 sq.m. (424 sq.ft.) approx.



TOTAL FLOOR AREA : 90.4 sq.m. (973 sq.ft.) approx.

Whilst every attempt has been made to ensure the accuracy of the floorplan contained here, measurements of doors, windows, rooms and any other items are approximate and no responsibility is taken for any error, omission or mis-statement. This plan is for illustrative purposes only and should be used as such by any prospective purchaser. The services, systems and appliances shown have not been tested and no guarantee as to their operability or efficiency can be given.  
Made with Metropix ©2021.

